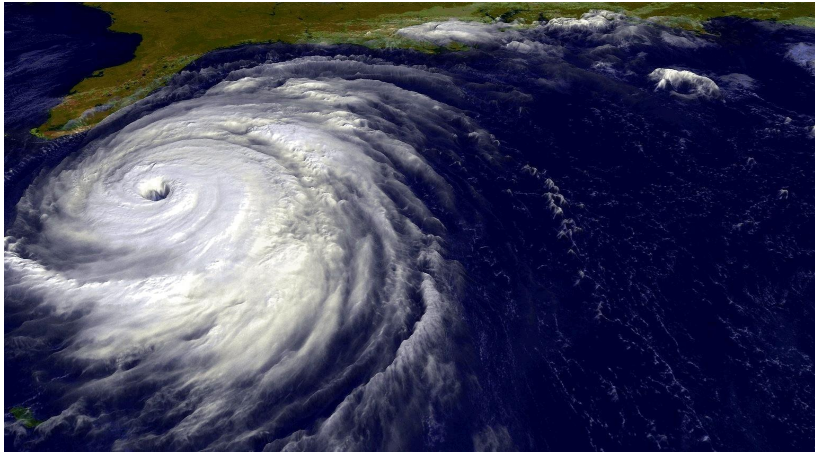


RÉUNION ISLAND :



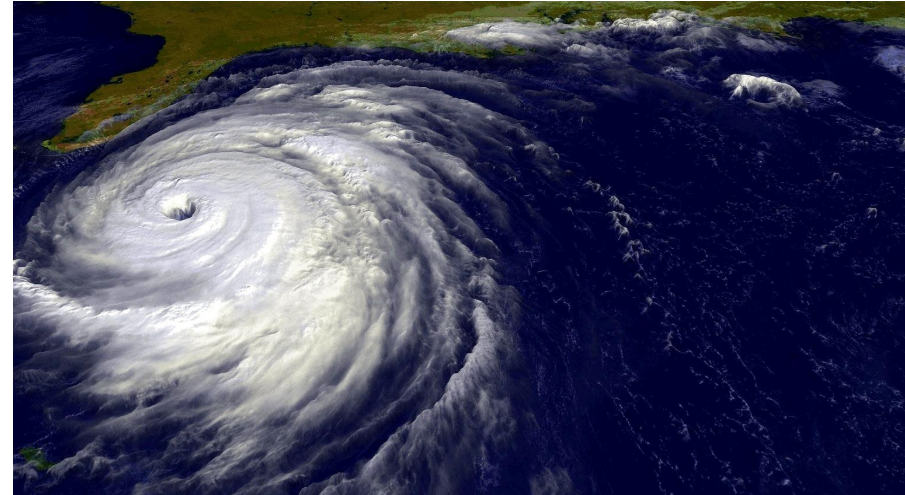
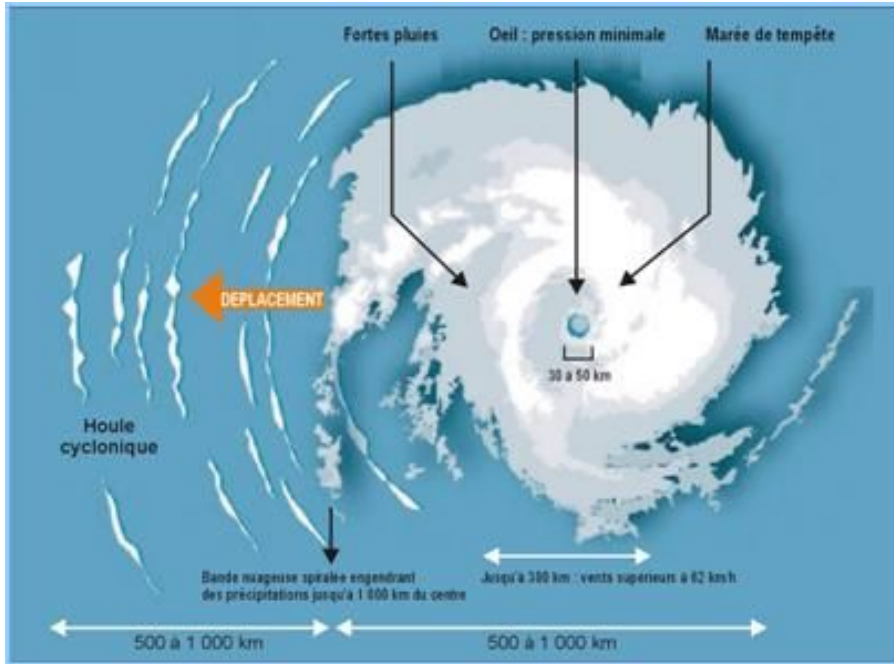


Natural disasters

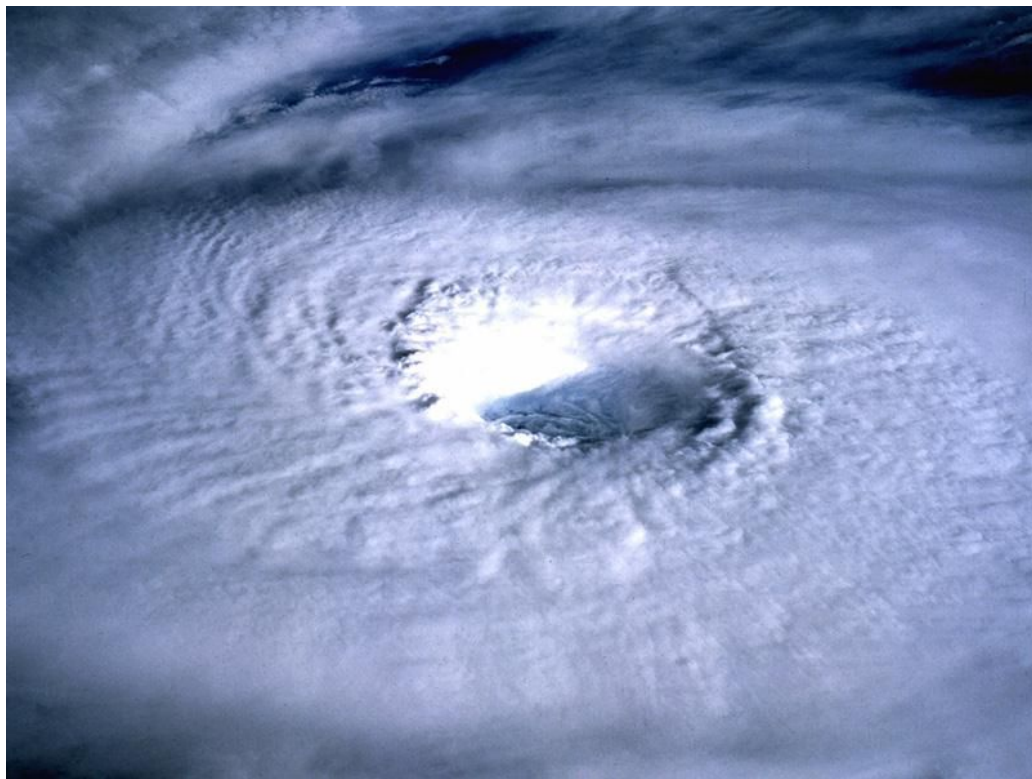


Hurricane:

What is this ?



eye of the cyclone



and around it



why cyclone touched our island ?

- our location :



The wind :



Are you scared ?

- Some years ago :



- this last year :



It is dangerous ?



→ cyclone 1948

Gamède in february 2006 ↘





↑
Firinga in January 1989

loss of farmers culture →



it makes floods and landslides

Landslide

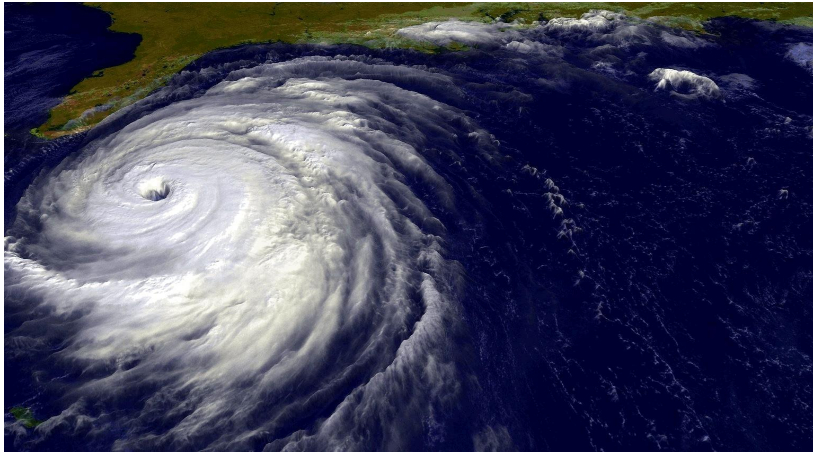


RÉUNION ISLAND :



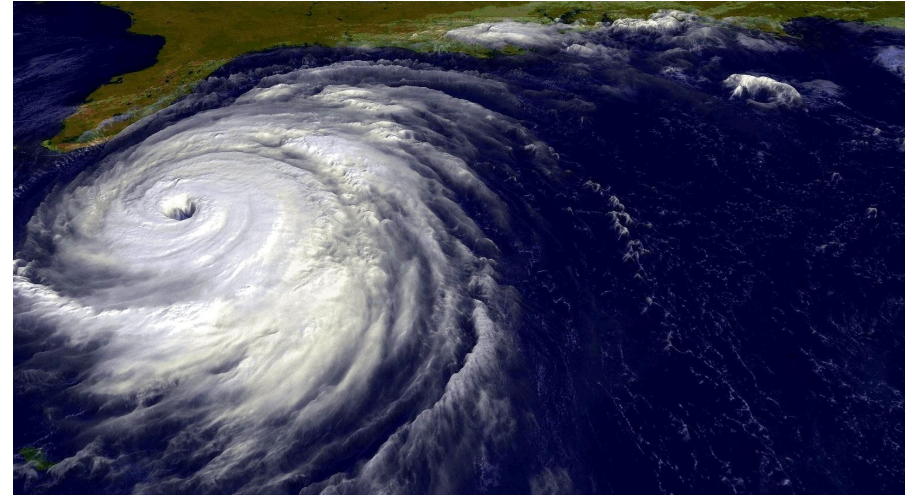
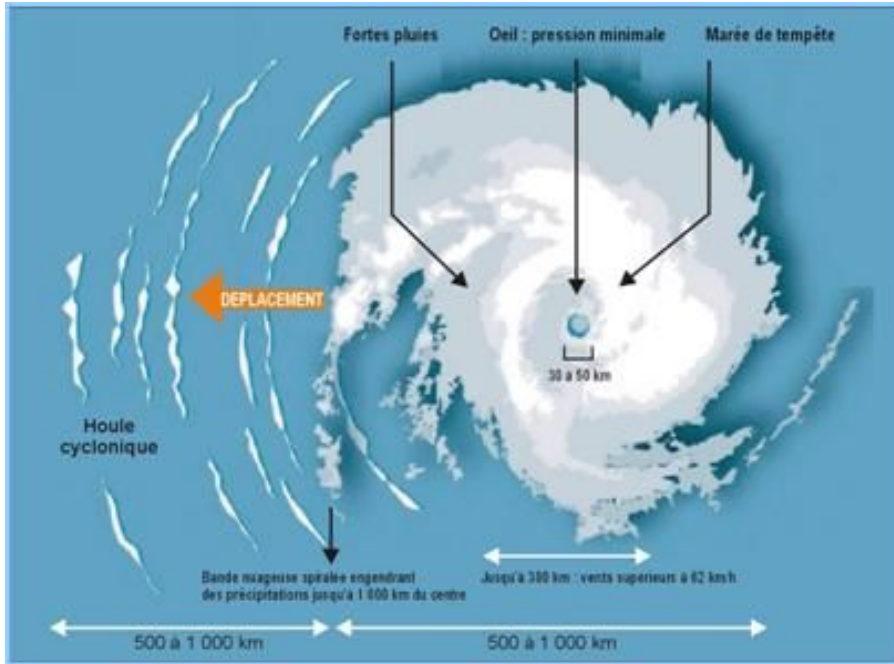


Natural disasters

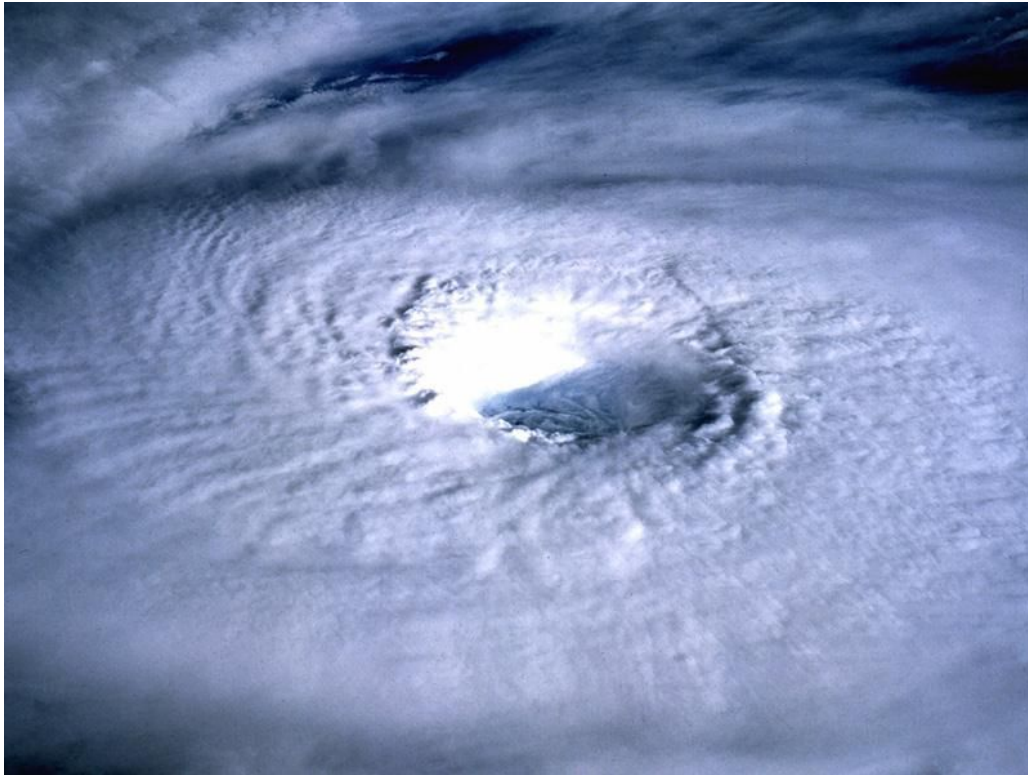


Hurricane:

What is this ?



eye of the cyclone



and around it

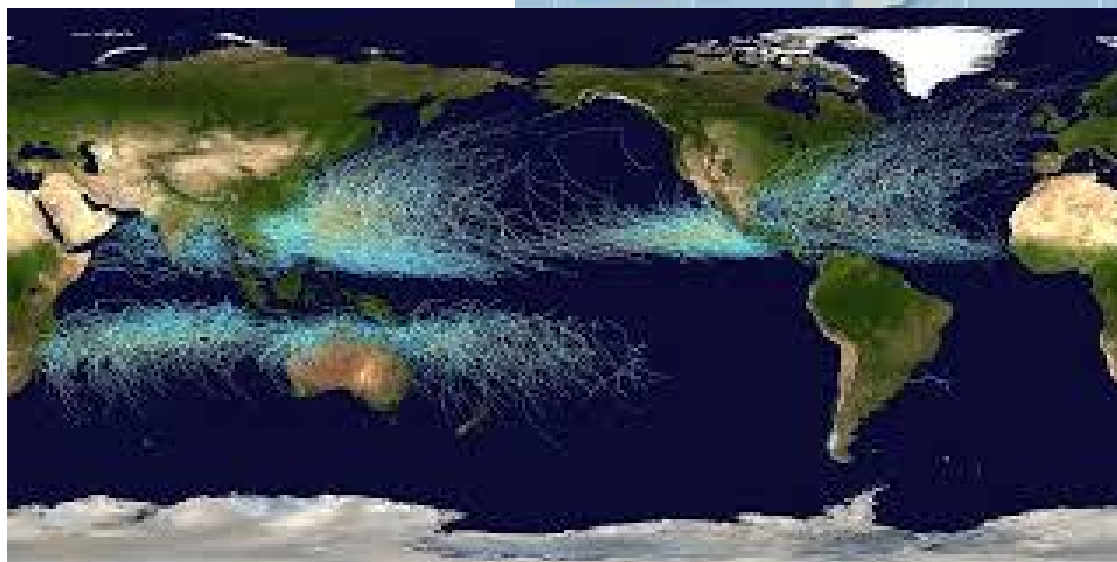


why cyclone touched our island ?

- our location :



The wind :



Are you scared ?

- Some years ago :



- this last year :



It is dangerous ?



→ cyclone 1948

Gamède in february 2006 →





Firinga in January 1989

loss of farmers culture →



it makes floods and landslides

Landslide

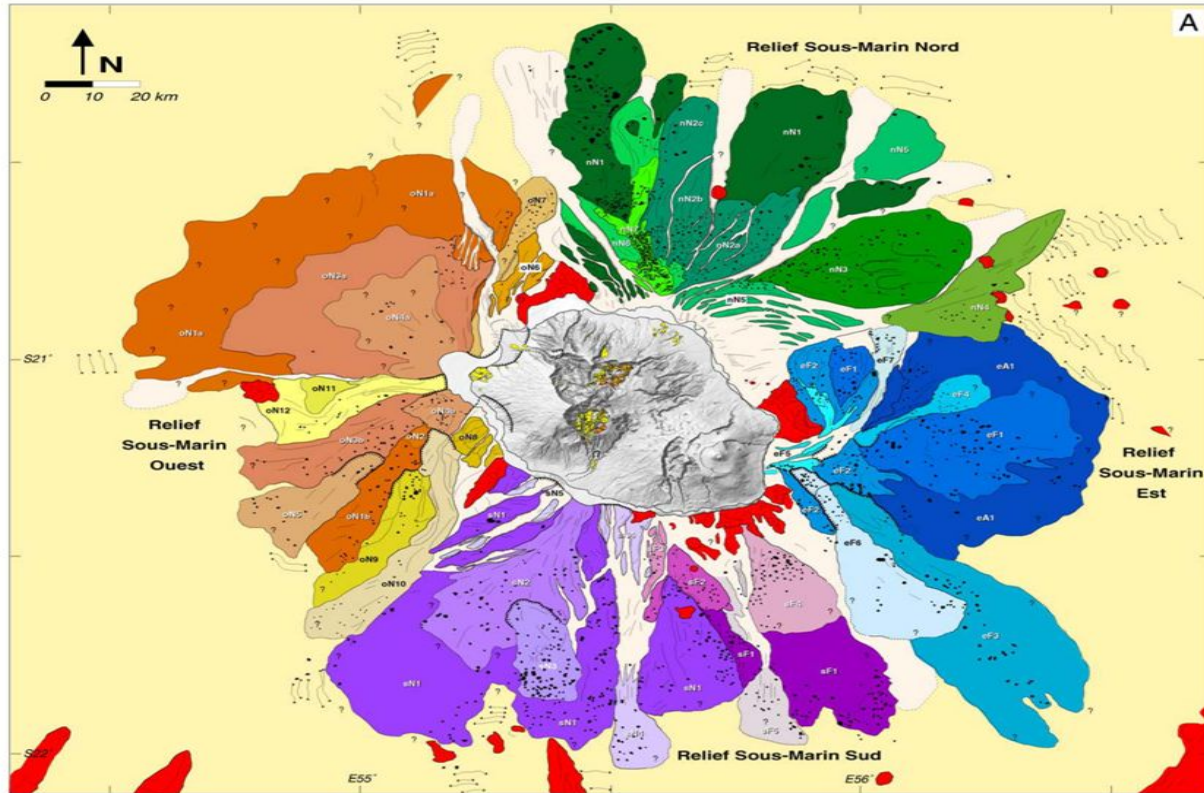


- Réunion Island have a lot of high relief



Figure 9 : Vue d'ensemble du cirque de Cilaos; au premier plan, la planèze de Dimitile burinée par l'érosion

- A lot of rocs which come from landslides suck under the sea. On this picture we can see where there are.



- Because of water in cliffs parts of the mountains fall



- Landslides change Réunion's geography



Figure 10 : Erosion d'un volcan, le Piton des Neiges. L'érosion a laissé une lame de matériel volcanique entre les cirques de Mafate et de Cilaos.

- Like on Piton de la Fournaise





Mahavel

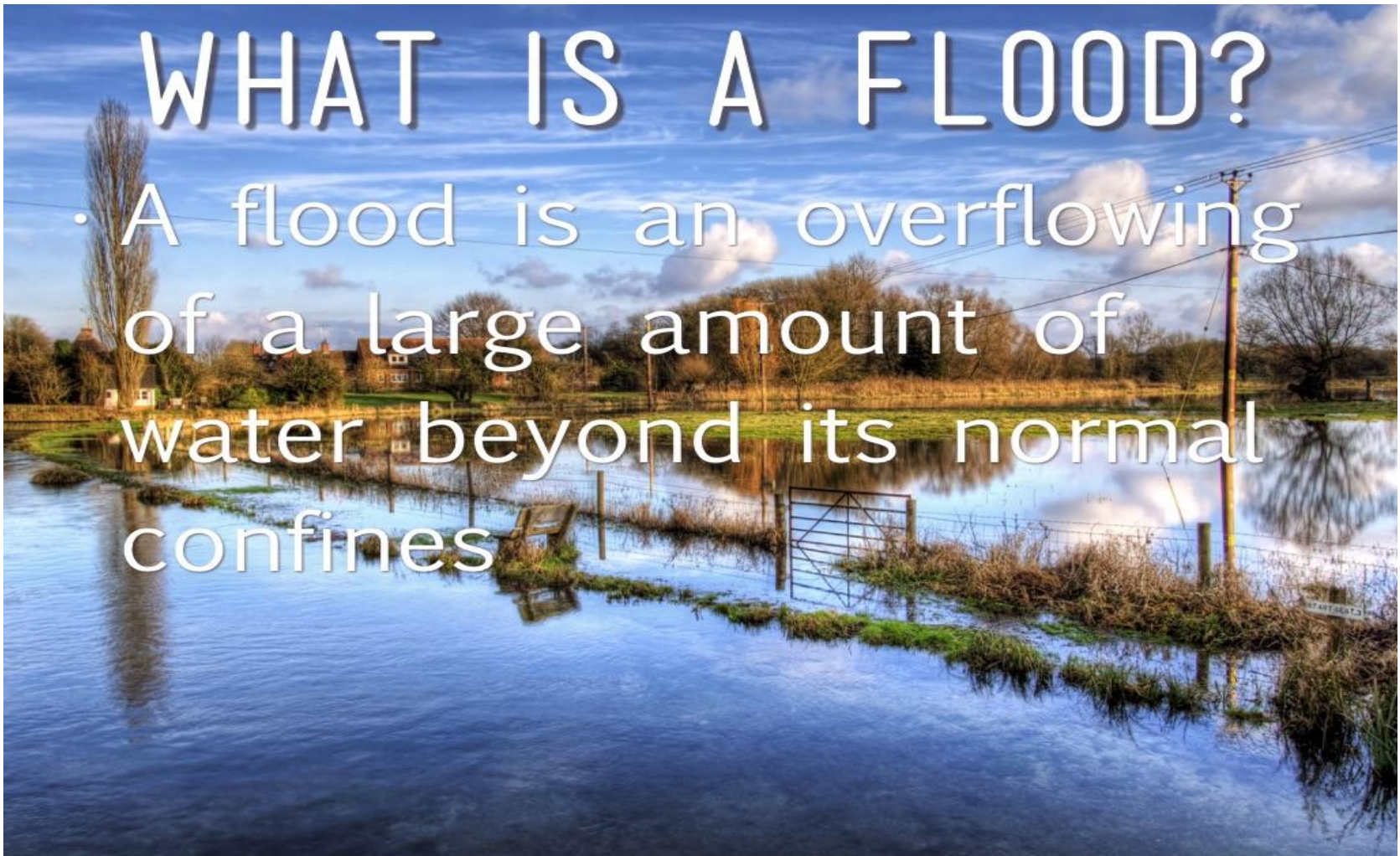
Rivière des Remparts

Floods

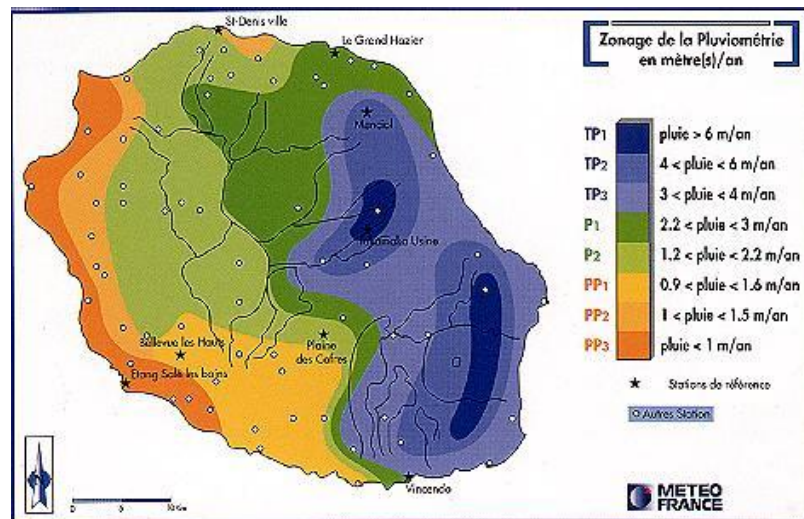


WHAT IS A FLOOD?

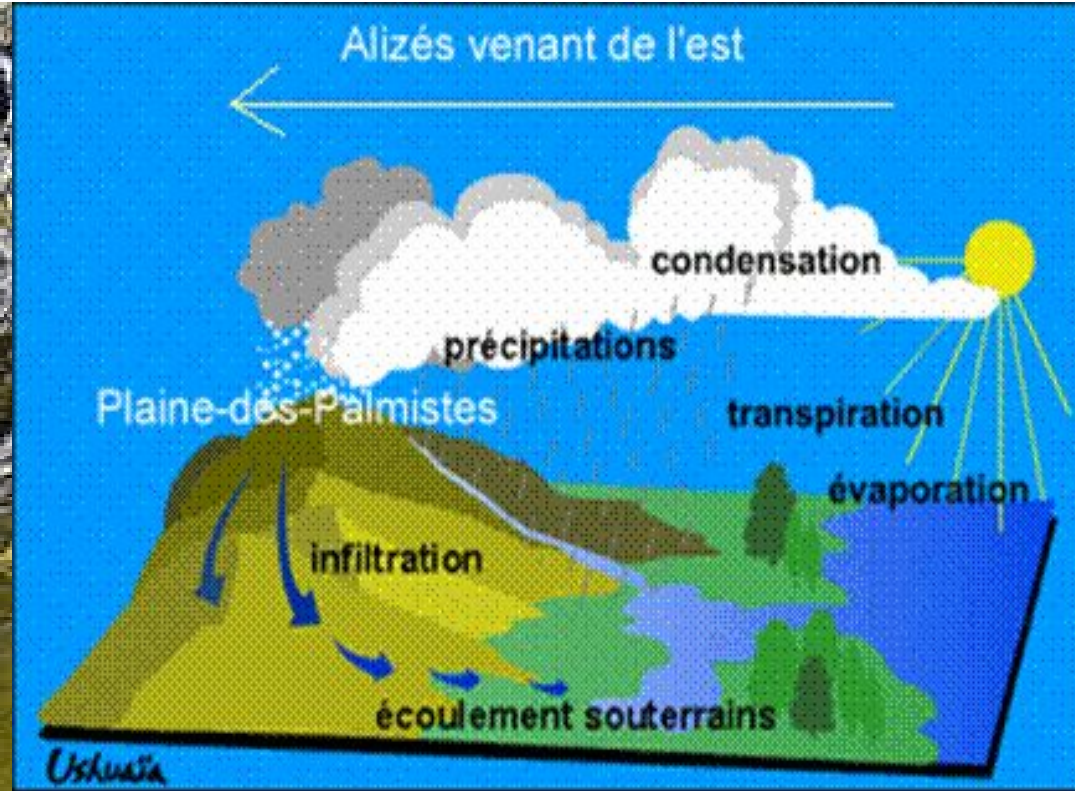
- A flood is an overflowing of a large amount of water beyond its normal confines



The rain in Reunion Island



Why do we have floods In Reunion island ?



A large, intense fire is burning at night, with bright orange and yellow flames rising from a dark, silhouetted forest. The fire is the central focus, with its light illuminating the surrounding trees and the dark sky. The word "FIRE" is overlaid in the center in a large, white, sans-serif font.

FIRE

The risk of forest fires in Reunion island



The most sensitive areas are:





Maido



❀ The Invasive Plants ❀



Vigne Marron (1840-1850)



Goyavier Goyavier. (1818)



Bredes chouchou. (1900)



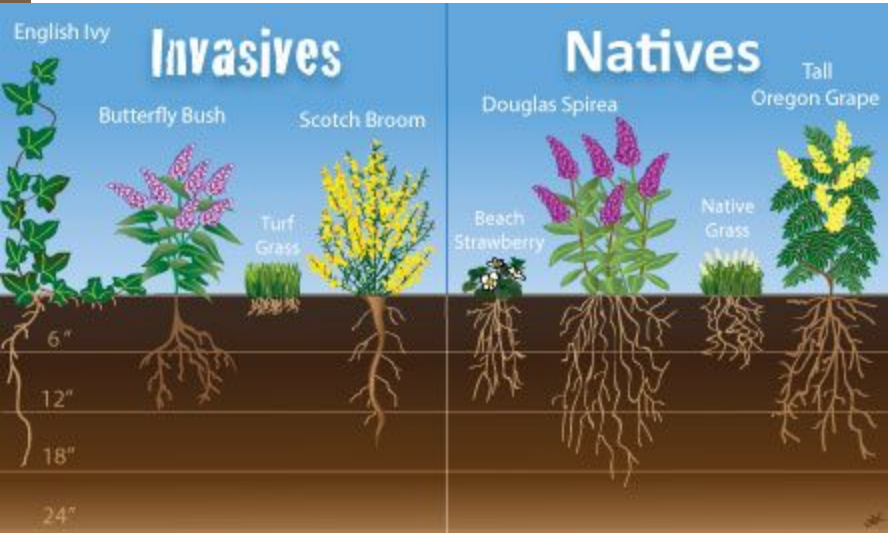
Bardadine.



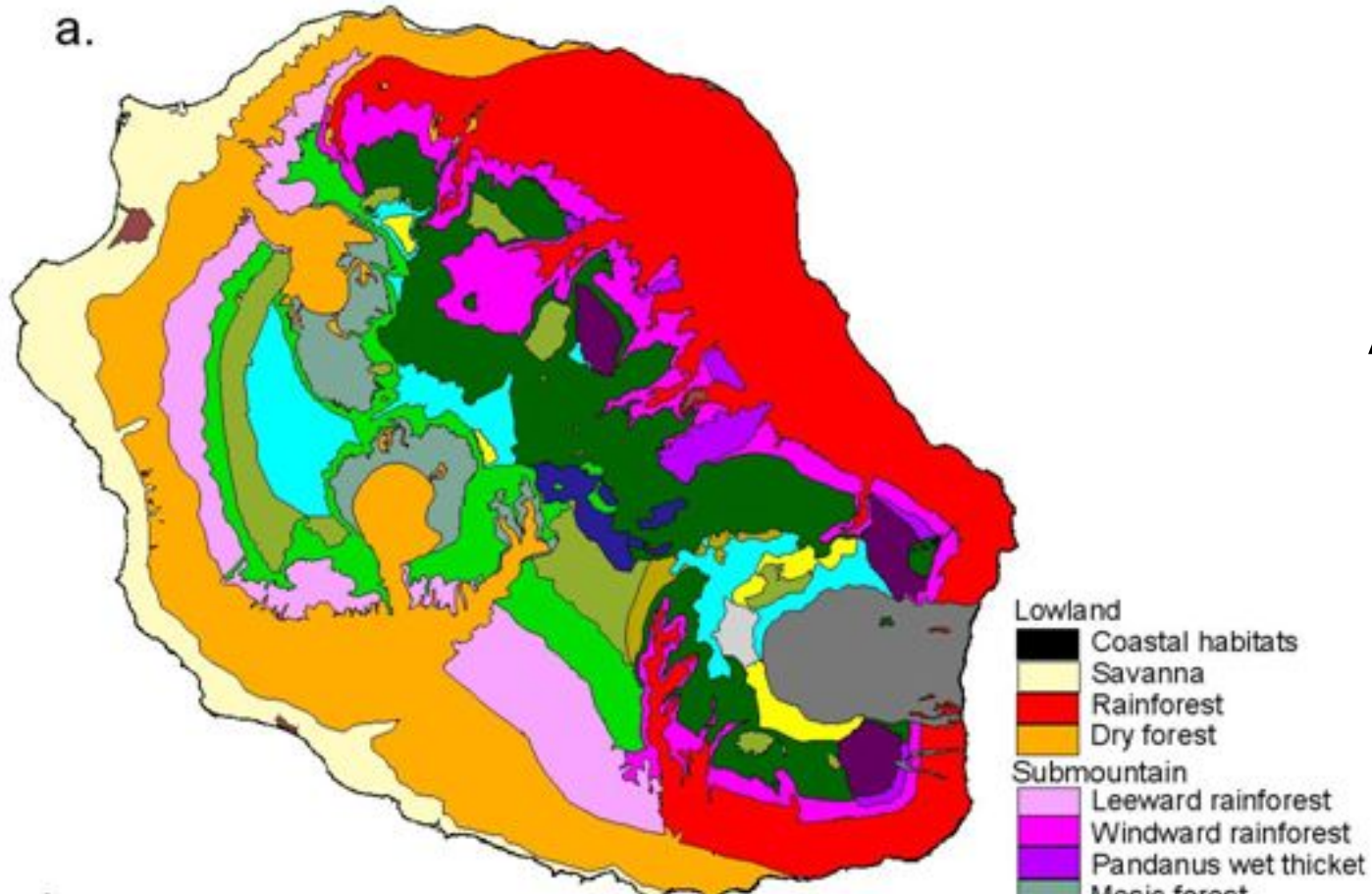
(1990)



How a plant grows from a seed

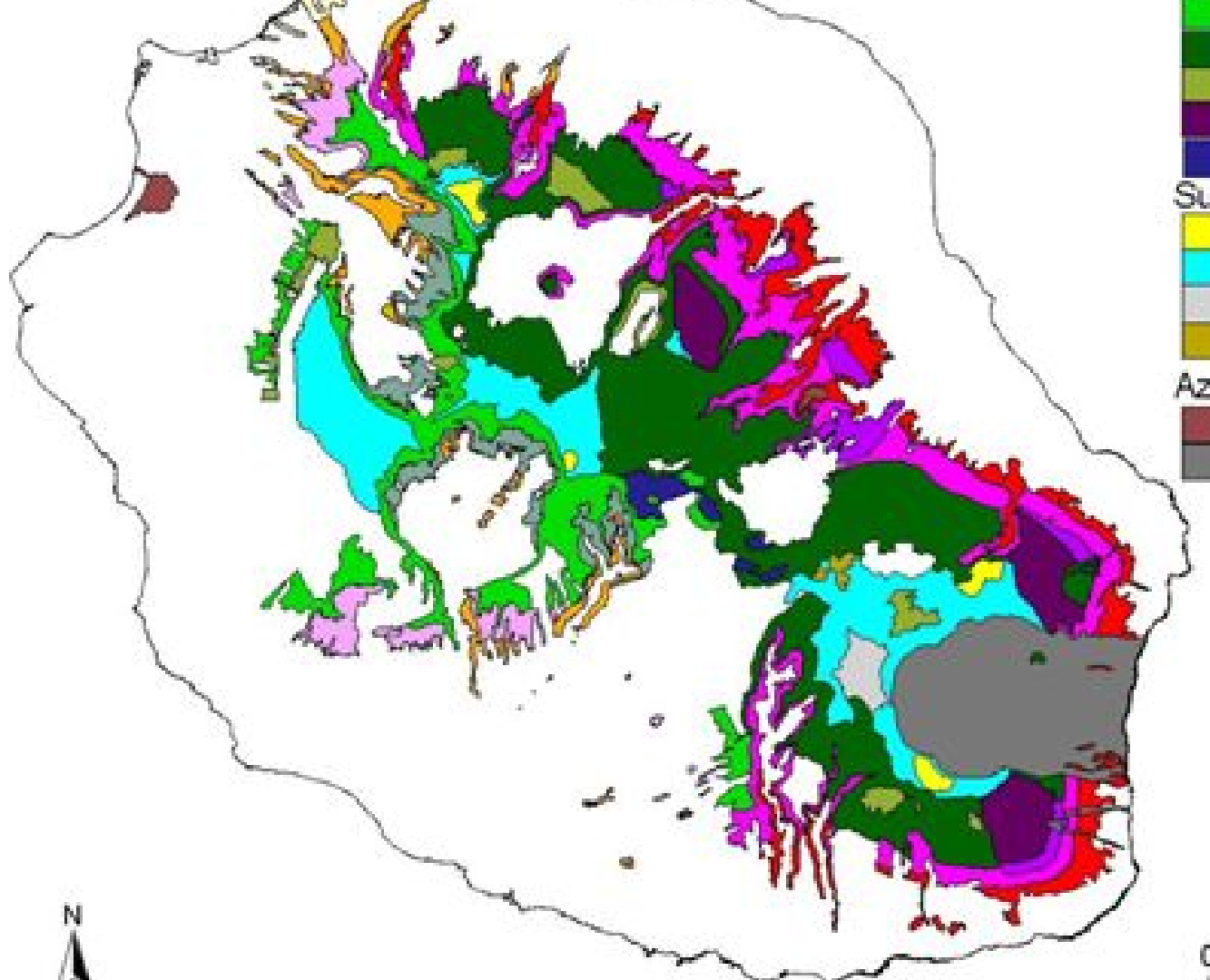


Comparison between the original and current distribution of vegetation



After (1700)

Now (2017)





Mouche bleue - Fly blue

2008



Caterpillars



Mechanical control



Chemical control



Biological control



The image is a pixelated, low-resolution digital illustration of a volcanic eruption. A bright, yellow-orange lava flow is shown erupting from a central point, with several distinct, glowing channels of lava spreading outwards in a fan-like pattern. The background is a solid black, which makes the fiery colors of the eruption stand out. Overlaid on the center of the image is the word "ERUPTION" in a large, bold, light pink or salmon-colored sans-serif font. The overall aesthetic is reminiscent of early computer graphics or a stylized, retro digital art style.

ERUPTION

PITON DE LA FOURNAISE:

Enclos



1977



Photographie : Pierre Thomas



Photographie : Olivier Mennier

La Réunion



VOLCANO

2 volcano:

The Piton de la Fournaise:

-Effusive volcano

The piton des neiges:

-red volcano

-dormant



What is an effusive volcano?

An effusive eruption is a volcanic eruption characterized by the emission of fluid lava.



PITON DES NEIGES

The Piton des Neiges is the highest point of the island of La Réunion at an altitude of 3,070.50 meters.



volcanological observatory

→ The Piton de la Fournaise volcanological observatory was created in 1979.

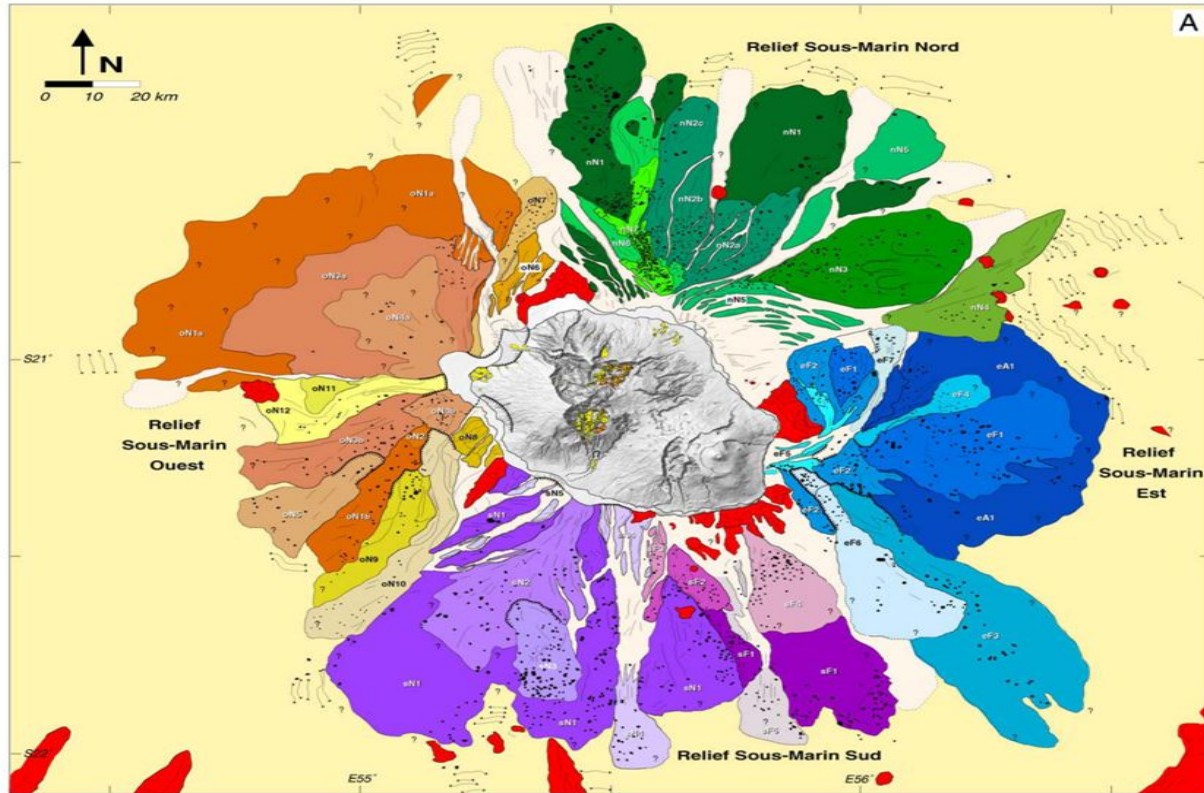


- Réunion Island have a lot of high relief



Figure 9 : Vue d'ensemble du cirque de Cilaos; au premier plan, la planèze de Dimitile burinée par l'érosion

- **A lot of rocs which come from landslides suck under the sea. On this picture we can see where there are.**



- Because of water in cliffs parts of the mountains fall



- Landslides change Réunion's geography



Figure 10 : Erosion d'un volcan, le Piton des Neiges. L'érosion a laissé une lame de matériel volcanique entre les cirques de Mafate et de Cilaos.

- Like on Piton de la Fournaise





Mahavel

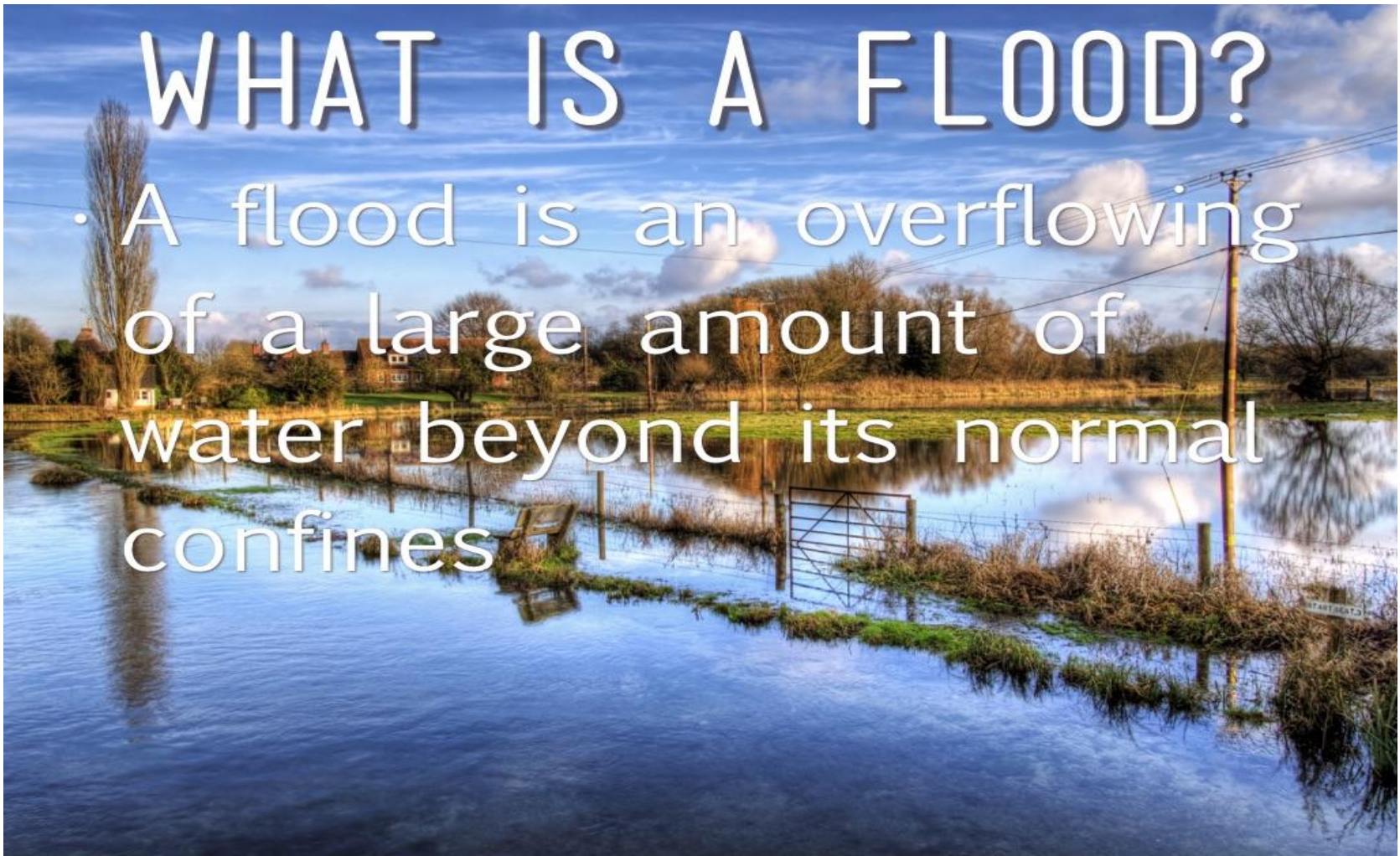
Rivière des Remparts

Floods

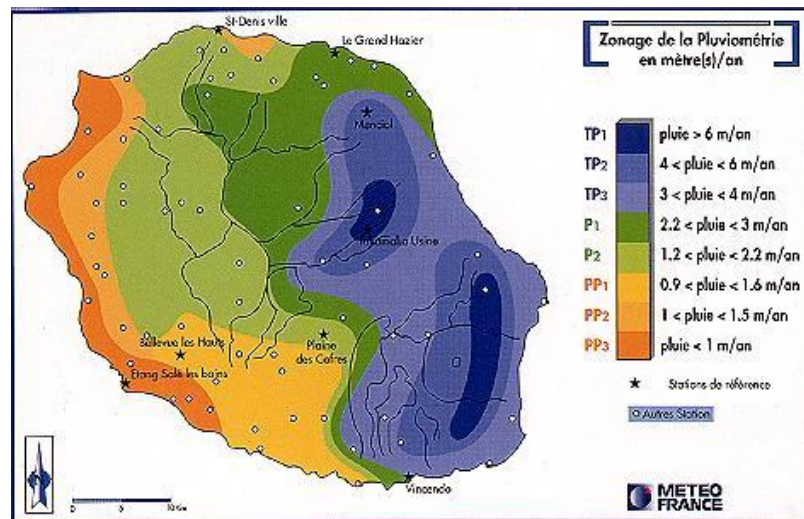


WHAT IS A FLOOD?

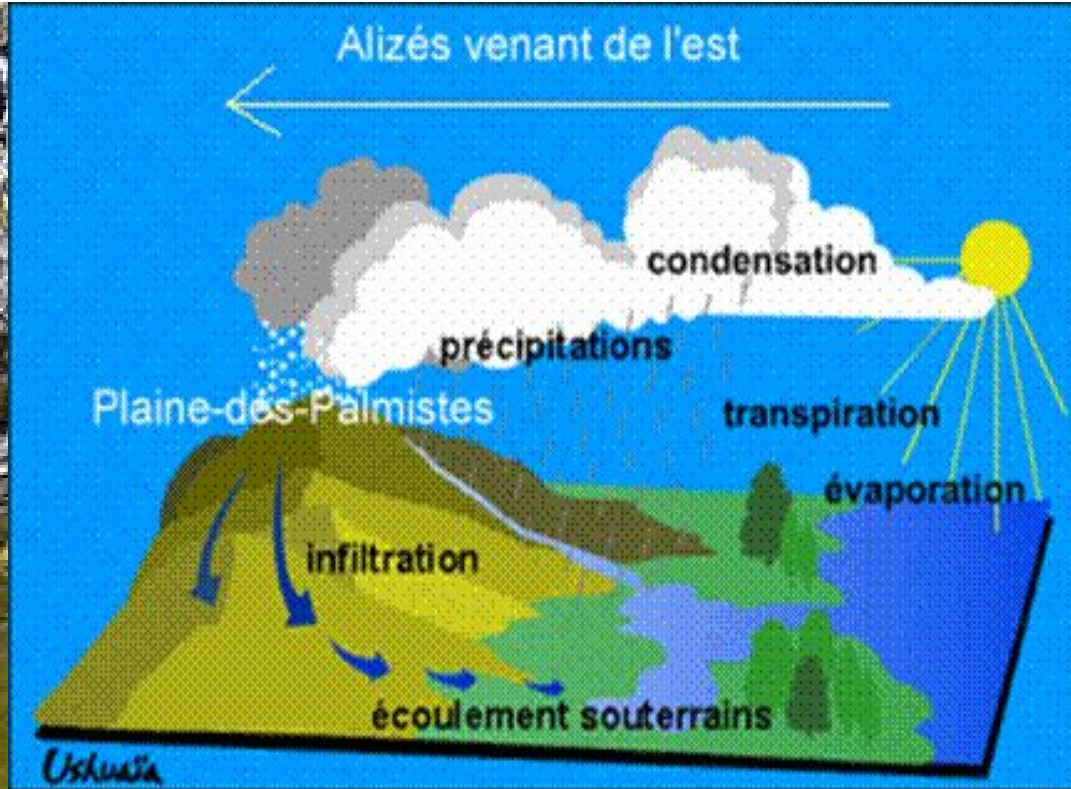
- A flood is an overflowing of a large amount of water beyond its normal confines



The rain in Reunion Island



Why do we have floods In Reunion island ?



A large, intense fire is burning at night, with bright orange and yellow flames rising from a dark, silhouetted forest. The fire is the central focus, with its light illuminating the surrounding trees and the dark sky. The word "FIRE" is overlaid in the center in a large, white, sans-serif font.

FIRE

The risk of forest fires in Reunion island



The most sensitive areas are:





Maido



❀ The Invasive Plants ❀



Vigne M



Bredes chouchou. (1900)



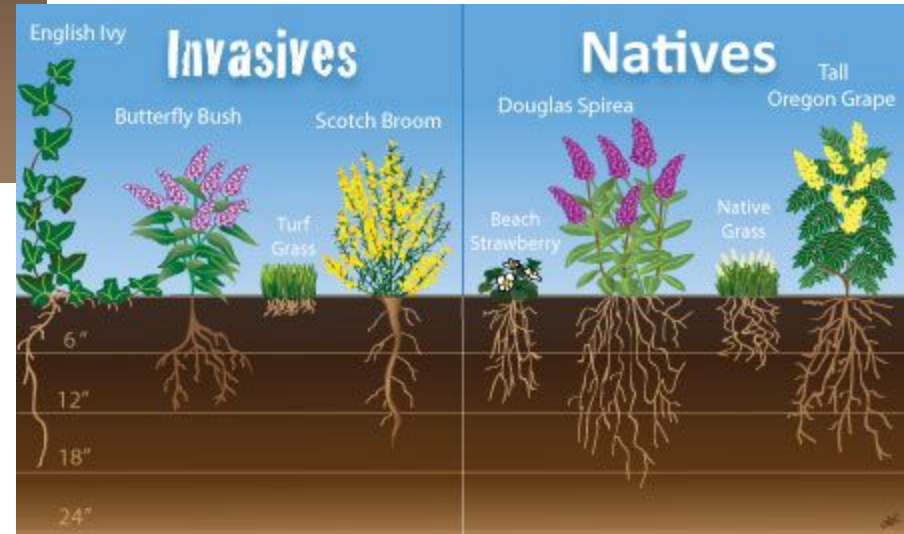
Goyavier Goyavier. (1818)



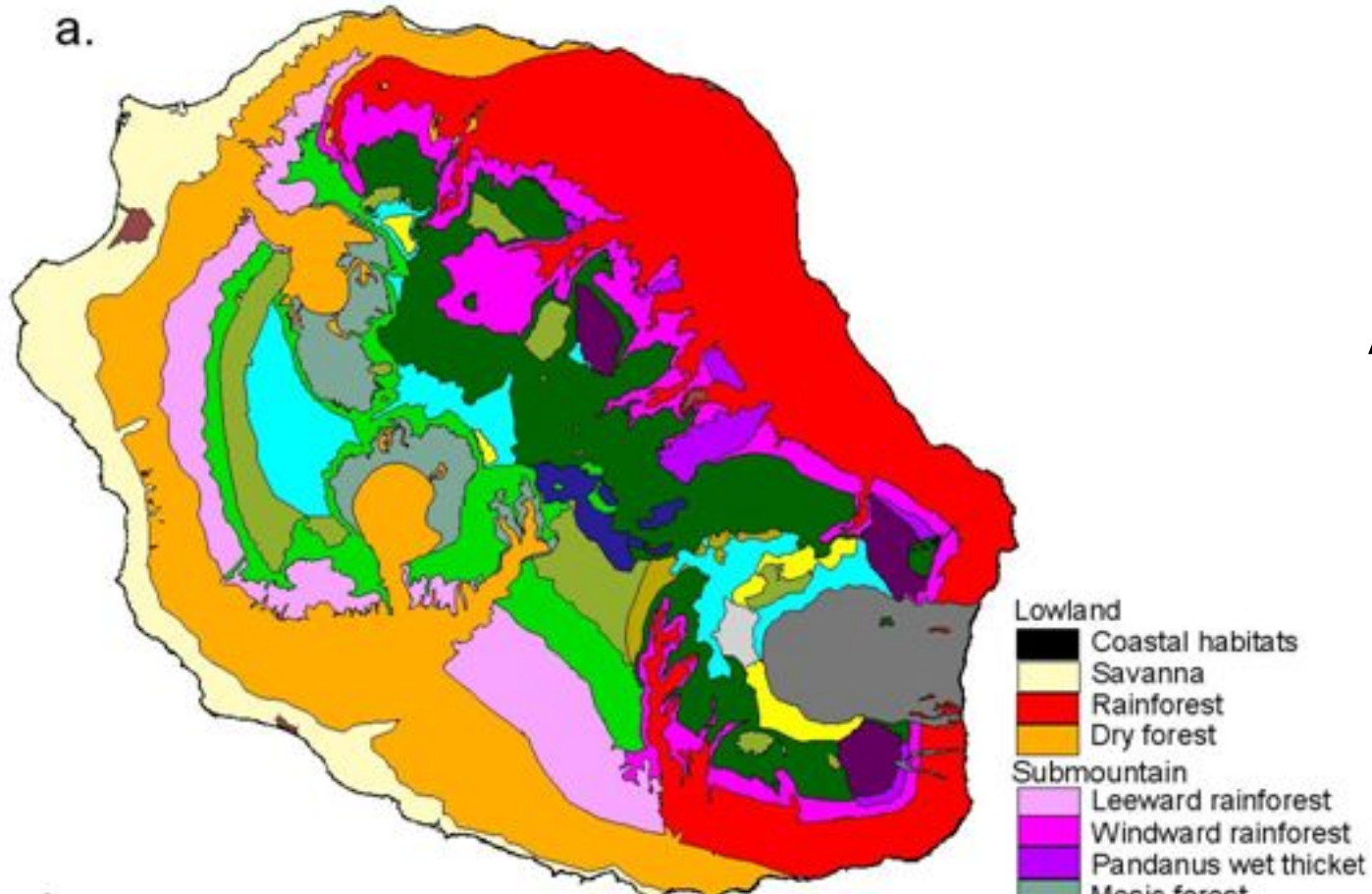
Bardadine. (1990)



How a plant grows from a seed

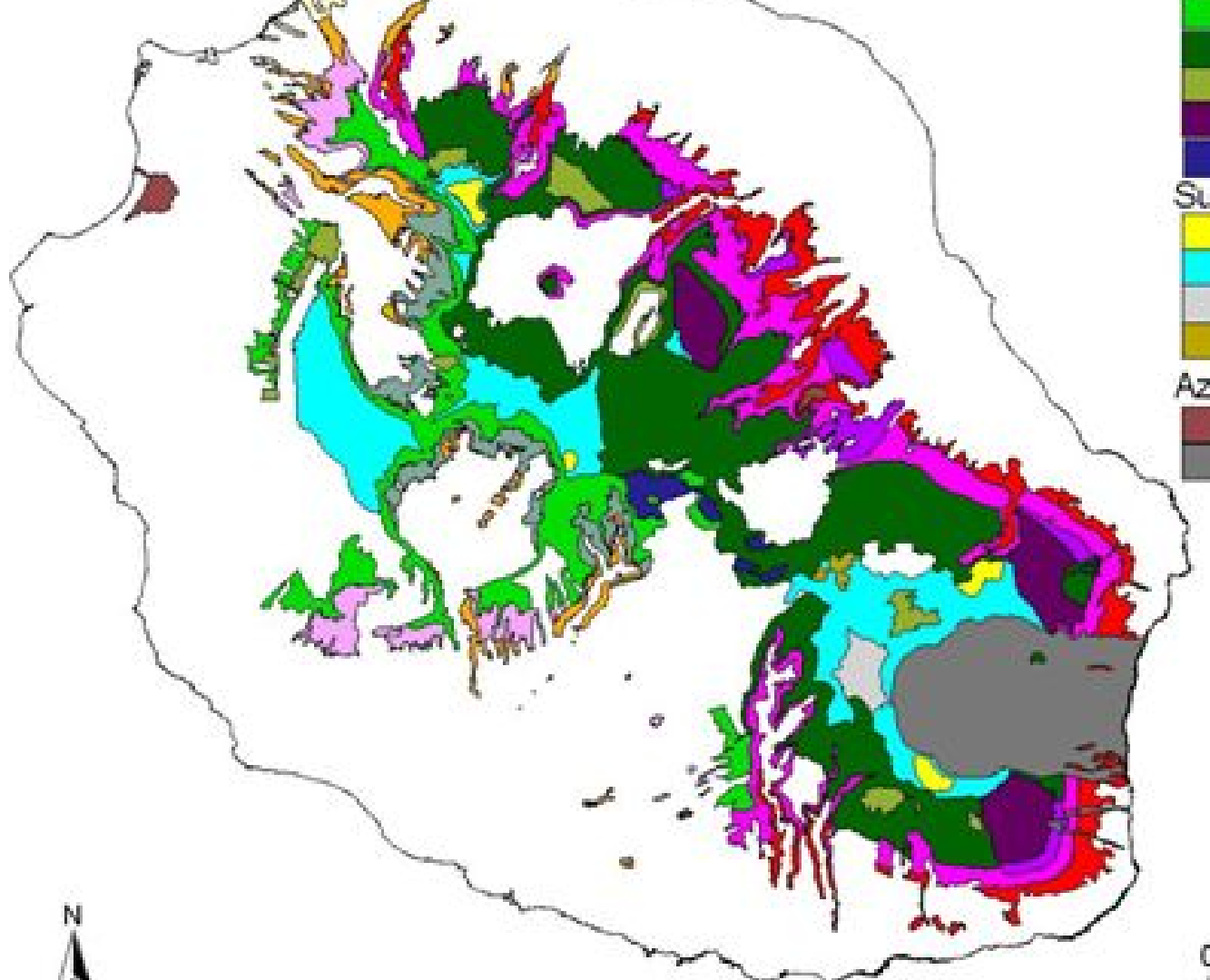


Comparison between the original and current distribution of vegetation



After (1700)

Now (2017)





Mouche bleue - Fly blue

2008



Caterpillars



Mechanical control



Chemical control



Biological control



The image is a pixelated, low-resolution digital illustration of a volcanic eruption. A bright, yellow-orange lava flow is visible at the base of the volcano, with several streams of lava cascading down the slopes. The volcano itself is a dark, conical shape. The background is black. The word "ERUPTION" is written in large, light pink, sans-serif capital letters across the center of the image, partially obscuring the volcano and the lava flow.

ERUPTION

PITON DE LA FOURNAISE:

Enclos



1977



Photographie : Pierre Thomas



Photographie : Olivier Mennier

PITON DES NEIGES

The Piton des Neiges is the highest point of the island of La Réunion at an altitude of 3,070.50 meters.



volcanological observatory

→ The Piton de la Fournaise volcanological observatory was created in 1979.

